



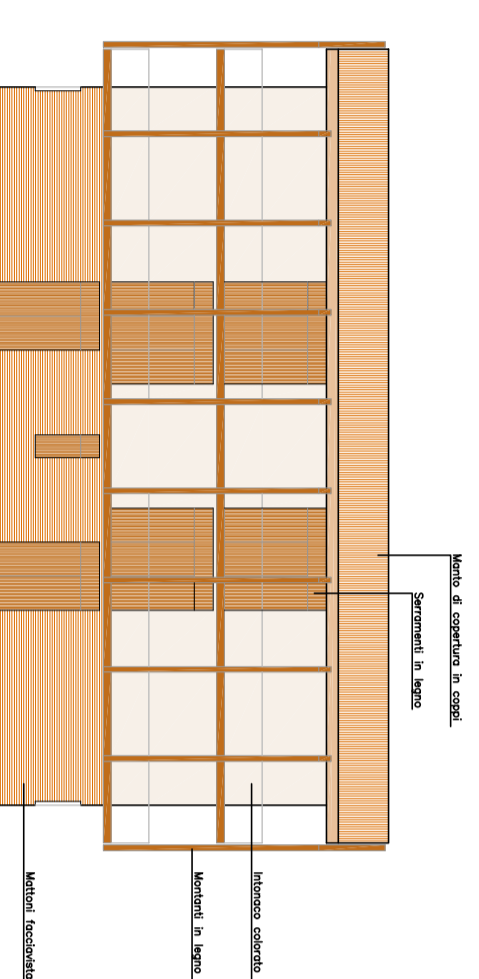
VISTA DA SUD



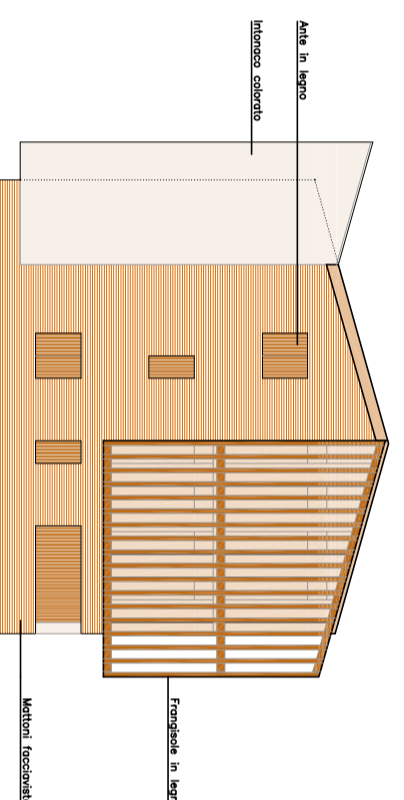
VISTA DA VIA DELLA BASELLA



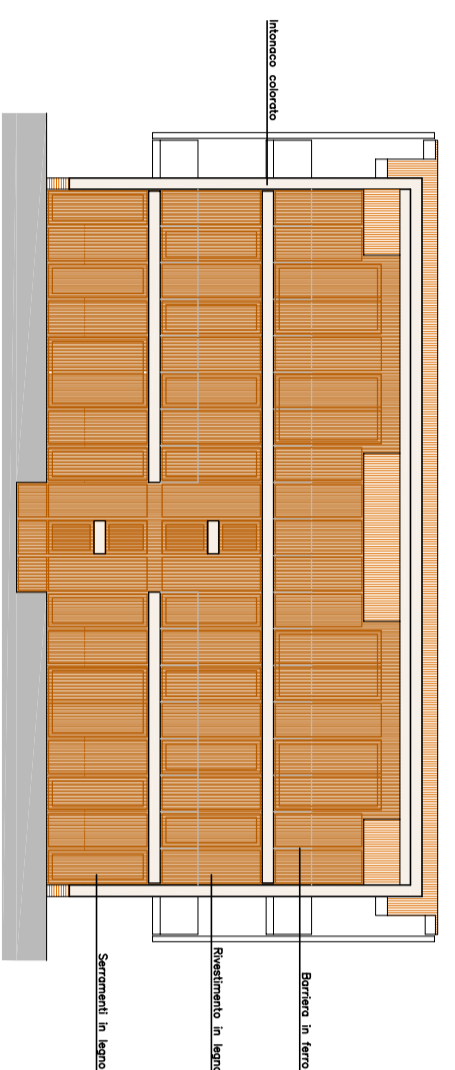
VISTA DA NORD-EST



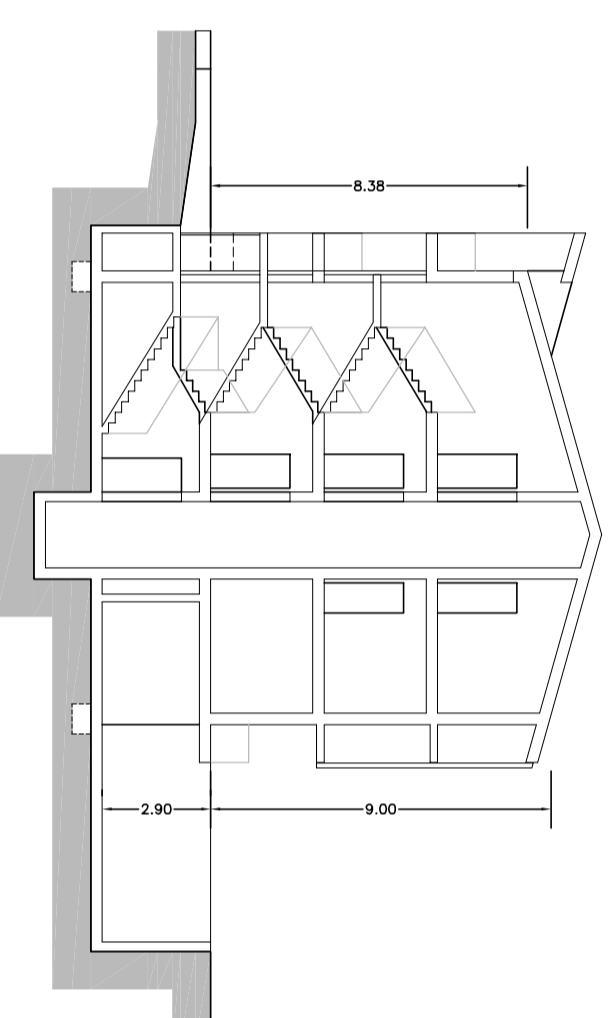
PROSPETTO RETRO



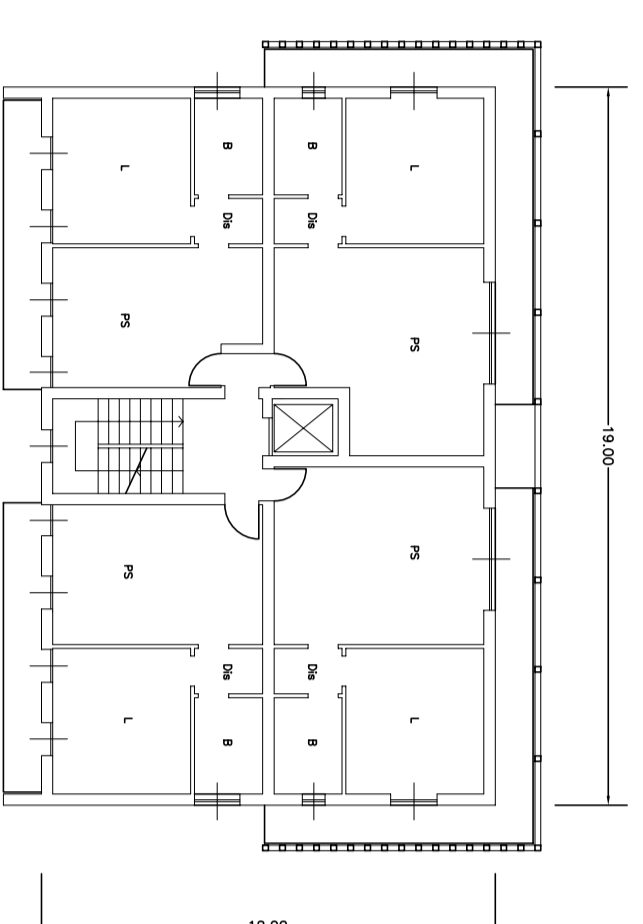
PROSPETTO LATERALE



PROSPETTO FRONTE

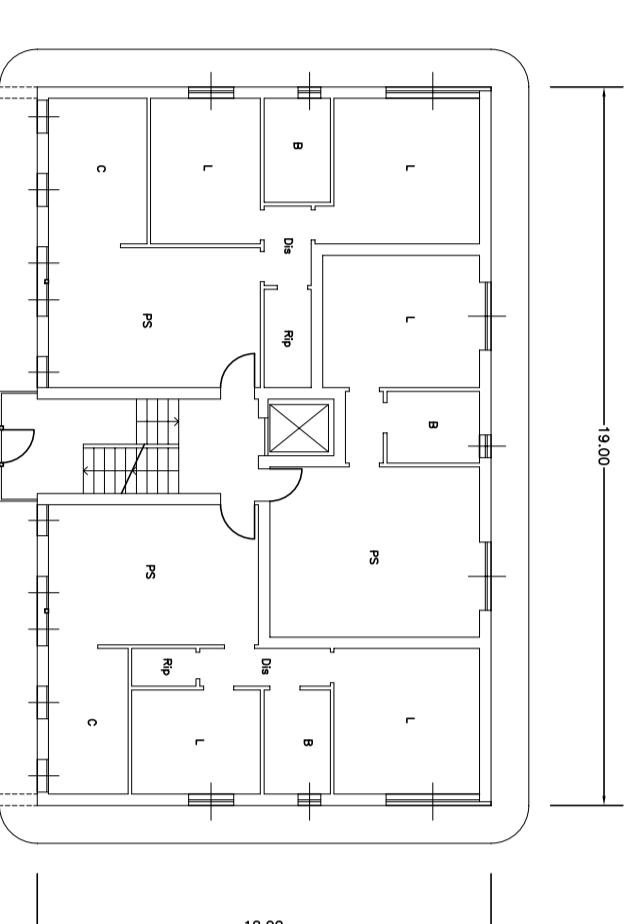


SEZIONE TRASVERSALE

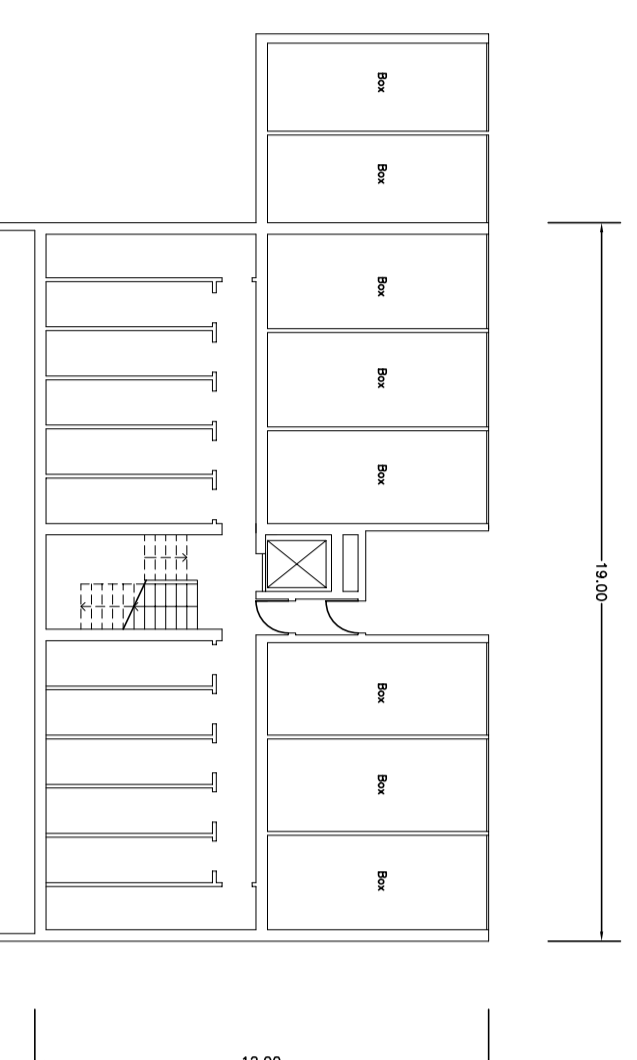


PIANTA P. PRIMOSECONDO

PRESCRIZIONI:  
BALCONI CON STRUTTURE ARCHITETTONICHE FRANGISOLE ESCLUSE DAL CALCOLO DEL VOLUME E DELLA SUPERFICIE COPERTA  
PREVEDERE N°2 POSTI AUTO INTERI PER APPARTAMENTI TRILOCALI E OLTRE



PIANTA P. TERRA



PIANTA P. INTERATO

<b>studio manbretti</b>		<b>architettura urbanistica interni</b>	
Via fiume, 3 • 24050 zanica bg • tel. 035729253 • e-mail: archimanbretti@tin.it		P.zza GIOVANNI XXIII n°7 - ZANICA	
progettato DOTT. ARCH. ANGELO MANBRETTI		coordinato PIROSCALMA SAN NICOLA'	
autorizz. n° L. 15/01/2007		autorizz. n° 15/01/2008	
data 1/2007		data 1/2008	
scala 1:200		scala 1:200	
066/07		066/07	
9		9	